

GENERAL COUNSEL
OF COPYRIGHT

AUG 5 1996

RECEIVED

Before the
COPYRIGHT ARBITRATION ROYALTY PANEL
Washington, DC 20024
Claim to 1995 Cable Copyright Royalties

0000587

I. CLAIMANT: Elcom of Wilmington, Inc., licensee of television station WECT, Wilmington, North Carolina, and Ellis Communications, Inc., its parent corporation.

II. ADDRESS OF CLAIMANT: 322 Shipyard Blvd., Wilmington, NC 29412
Phone: 910-791-8070, Fax 910-350-6790.

III. PERIOD FOR WHICH CLAIM IS FILED:
January 1, 1995 - December 31, 1995

IV. NATURE OF WORK FOR WHICH CLAIM IS FILED:

- (1) All station-produced programming (including newscasts, public affairs, children's and sports programming) broadcast by WECT. Examples include but are not limited to:
 - (a) WECT News
 - (b) Public Affairs
 - (c) Sports
- (2) The station's entire broadcast day is a compilation.
- (3) Syndicated programs for which WECT is the copyright holder of exclusive exhibition rights against other broadcast stations carried by a cable system in the WECT market area as a distant retransmission, including but not limited to:
 - (a) Various off-network, made for TV, syndicated programs by film and tape;
 - (b) Various motion pictures.
- (4) Sports events broadcast by WECT.

V. EXAMPLES OF DISTANT CABLE CARRIAGE IN 1995:

"Opening of the Eastern Belt Tobacco Market" was broadcast on WECT and retransmitted by Cox Cable serving Myrtle Beach, SC, on July 18, 1995 at 6:00 a.m.

Respectfully submitted,

Elcom of Wilmington, Inc.
[LICENSEE]

Vice President & General Manager
[Title]

By: [Signature]

July 29, 1996
[Date]

WELT

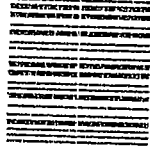
CERTIFIED

P 90E 519 615 180

MAIL



2000



20024

U.S. POSTAGE
PAID
WILMINGTON, NC
28401
JUL 31, 2000
AMOUNT

225

99041807-05

Copyright Arbitration Royalty Panel
PO Box 70977
Southwest Station
Washington, DC 20024

322 Stimpard Blvd., Wilmington North Carolina 28406 • 310-794-2810

